

Profile:Match2

Development Summary



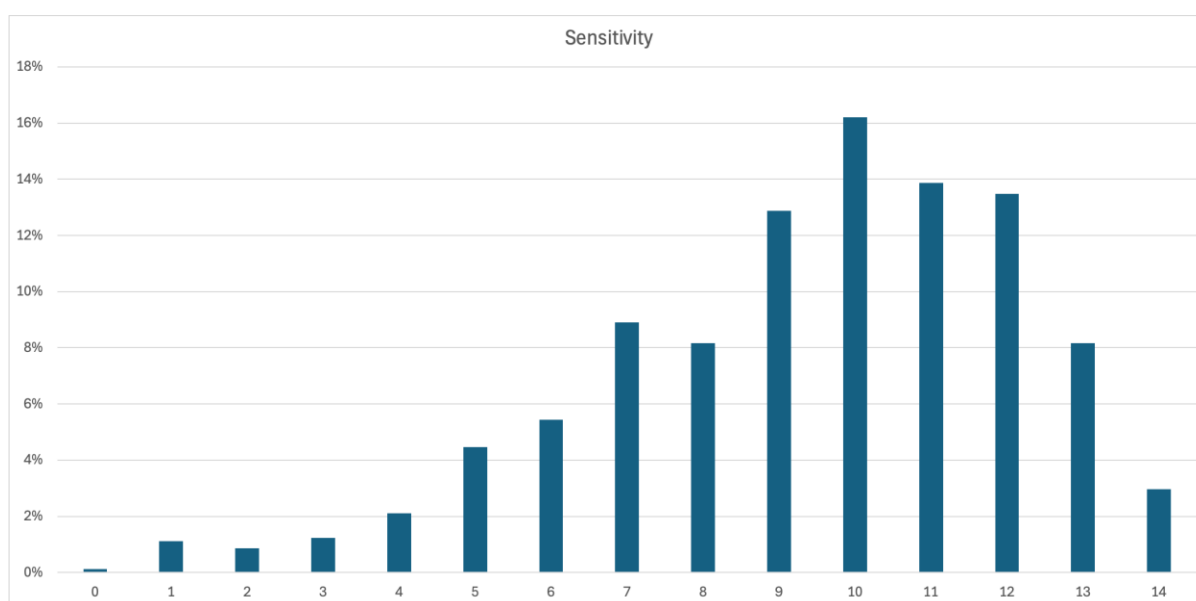
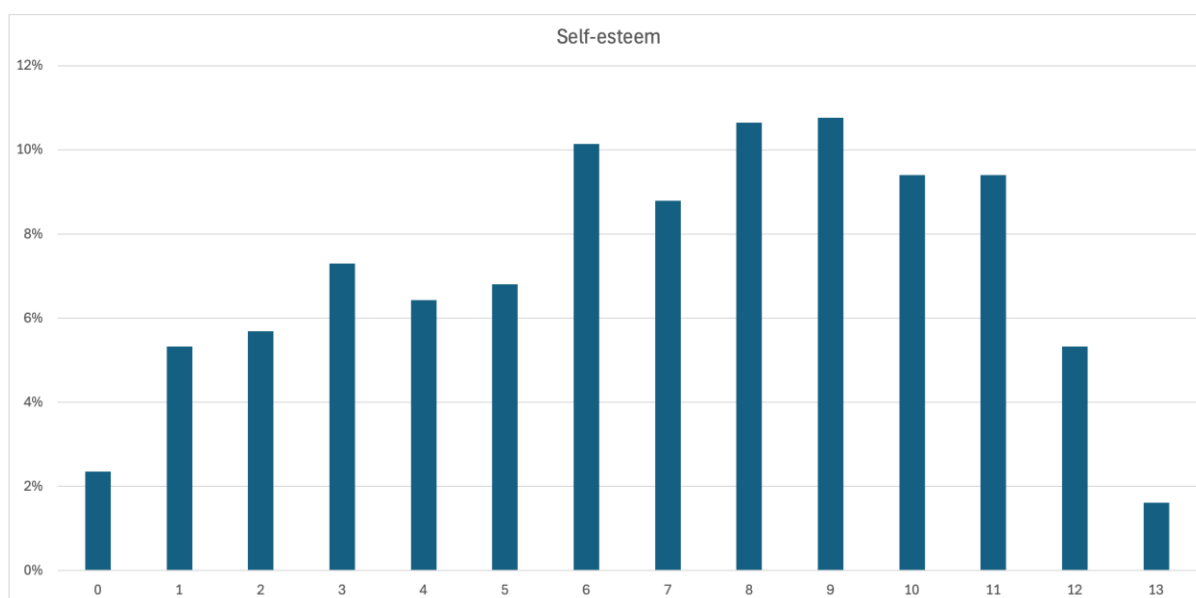
pcl opening
minds

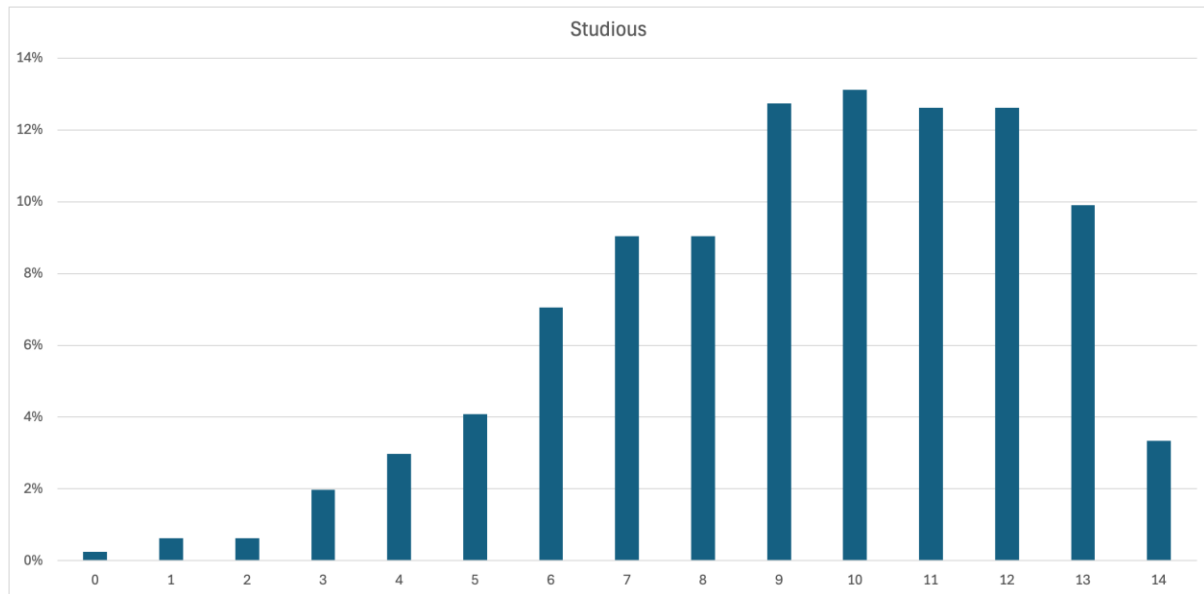
risktype
compass[®]

Several exciting developments have taken place with Profile:Match2 over the last 2-3 years, resulting in a more efficient and balanced assessment.

To decrease completion time, the number of items in the P:M2 survey has been reduced from 206 to 142. Focus on the most effective items ensured that scale reliabilities were maintained, and in some cases improved, whilst reducing completion time by approximately one third.

Further work was also deemed necessary on three of the ten P:M2 scales to improve the distribution of scores and minimise skew. Several dozen new items were trialled for the Self-esteem, Sensitivity and Studious scales, resulting in a final selection of items that improved scale distribution and maintained reliabilities. These new scales are illustrated below:





Profile:Match2 uses norms with a 50/50 balance between males and females. Norm group sizes typically range between 9-10 thousand depending on scale, although the recent developments in the Self-esteem, Sensitivity, and Studios scales have meant these scales currently have smaller norm groups.

To further improve scale distribution, PCL will be adopting a more granular 6-point Likert scale response format at the end of August 2024. This will be visible onscreen when completing the assessment but will have no effect on the current reports.